



## Classic TBi 252 E1

Air cooled

Very compact and ergonomic

Screw-on fume shroud

### Technical data

MIG/MAG semi-automatic fume extraction welding torch TBi 252 E1

Rating at 60% duty cycle  
(10 min. cycle)

- Mixed gas: 200 A  
- CO<sub>2</sub>: 230 A

Cooling method air cooling

Wire diameter 0.8 - 1.2 mm

Gas flow 10 l/min

Technical specification according to IEC 60974-7

Weight with 1.5m cable 1.30 kg

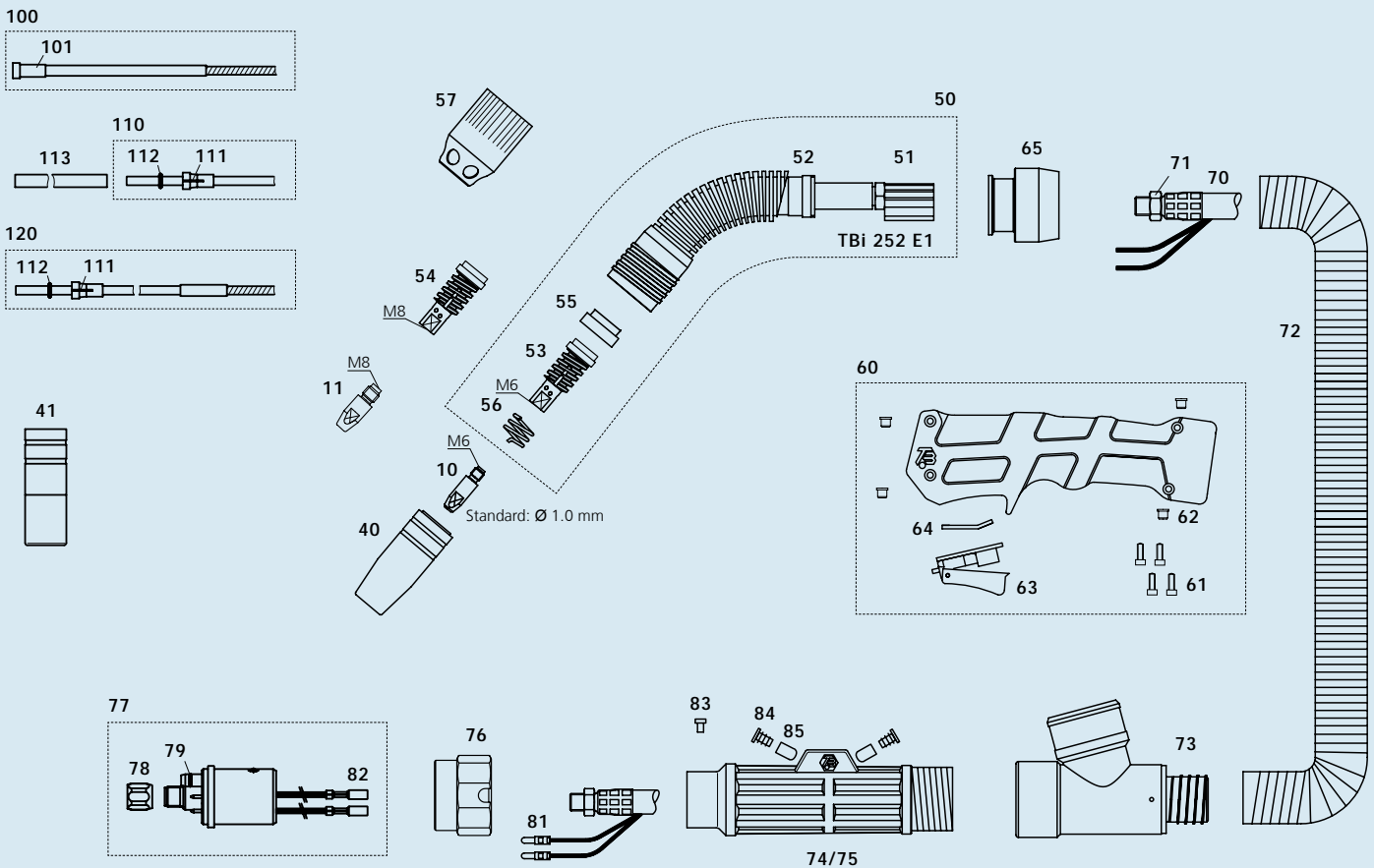
Connection Euro-Central connector,  
other connectors (e.g. CLOOS®,  
ESAB®, Lincoln®) available upon  
request.

Torch rating will be reduced when using pulsed-arc power sources.  
Custom lengths of the cable assembly are available upon request.

### Ordering Information

TBi 252 E1 ESG, 50° bent 254P3Y13\_0\*

\* At the blank, please insert 3, 4 or 5 for a torch length of 3, 4 or 5 m.



Pos.	Description	Part. No.	Pos.	Description	Part. No.
<b>Contact tips</b>					
▶ 10	Contact tip M6x28, Ecu	340P__1069*	70	Coaxial cable cpl., 25 sqmm	359P2511_0*
10	Contact tip M6x28, CuCrZr	340P__3069*	71	Hex nut M10x1	101P002005
10	Contact tip M6x28 Alu, Ecu	341P__1069*	72	Fume extraction hose D=29 mm	306P293600
11	Contact tip M8x30, Ecu	340P__1262*	73	T-joint cpl. for 29 mm fume hose	200P101013
11	Contact tip M8x30, CuCrZr	340P__3262*	74	Cable support housing (only with pos. 75)	701P102070
11	Contact tip M8x30 Alu, Ecu	341P__1262*	75	Cable support cover (only with pos. 74)	701P102071
<b>Gas nozzles</b>					
▶ 40	Nozzle con. diam. 15.0 mm	345P012003	76	Adaptor nut	701P001013
40	Nozzle con. diam. 15.0 mm long insul.	345P012303	77	Central adaptor ESG cpl., 2 poles, moveable pins	701P001048
41	Nozzle cyl. diam. 20.0 mm	345P011003	78	Sleeve nut M10x1	701P002005
41	Nozzle cyl. diam. 20.0 mm long insul.	345P011303	79	O-ring 4.0x1.0 mm (gas nipple)	365P100040
<b>Spare parts</b>					
50	Torch neck TBi 252 E1, cpl.	254P101005	81	Insulated connector, male, round	375P000004
51	Inner tube TBi 252 E1	254P101001	82	Insulated connector, female, round	375P000003
52	Outer tube TBi 252 E1	254P101002	83	Slotted screw M4x6	100P008401
53	Nozzle support TBi 252, M6	104P102003	84	Square cap	200P102006
54	Nozzle support TBi 252, M8	104P102005	85	Cap for water connector	395P000004
55	Insulator TBi 252 E1	254P102005	<b>Wire guides</b>		
56	Nozzle spring TBi 250/252/351	103P002006	100	Liner w/ insulation blue (x.40 m) for wire 0.8-1.0	324P1545_4*
57	Fume shroud TBi 252 E1	254P102003	▶ 100	Liner w/ insulation red (x.40 m) for wire 1.0-1.2	324P2045_4*
60	Handle cpl., blue, micro switch, TBi E1	380P916001	101	Collet for liners dia. 4.5 mm	330P025045
61	Socket cap screw M4x10	109P091204	110	Teflon liner blue (x.50 m) for wire 0.6-0.9	326P1540_5*
62	Threaded bush M4	252P102016	110	Teflon liner red (x.50 m) for wire 1.0-1.2	326P2040_5*
63	Micro switch, red, 3 poles	385P033011	111	Collet for teflon and PA liner 4.0 mm	331P020040
64	Sealing plate for handle TBi E1	252P102017	112	O-ring 3.50x1.50 mm (teflon liner)	365P150035
-	Gasket for handle TBi E1	252P102015	113	Support tube 5x4.4 mm, L=150 mm	329P544150
65	Handle fitting for 29 mm fume hose	252P102026	120	PA-Alu wire guide (x.50 m) for wire 1.0-1.2	328P2040_A*

▶ = Standard equipment

\* At the blank, please insert suitable information for torch length or wire diameter, e.g. 08 for 0.8 mm or 3 for 3 mm.

© 2007 TBI Industries GmbH. All rights reserved. Subject to change without notice. Warranty only when using original TBI consumables and spare parts. Excerpts and reprints not permitted. Nr. DOKP113122, 12/2007.